

## Sway Community Speed Watch report as of 20/3/2019

Sway Parish Council website has a page devoted to Community SpeedWatch where many of the latest statistics are published, so this report should be read in conjunction with the web page at <http://www.sway-pc.gov.uk/csw>.

This month we operated 5 x 1 hour sessions again, reporting 66 speeding vehicles to the police. Highest speed recorded was 50mph.

### The main stats for this month are:

Date	Time	Hrs	Location	Vehicles reported to Police	Total Vehicles passing	Maximum Speed	Number exceeding 35mph	%
18/3	08:00	1	DurnstownS	2	196	43	9	5%
18/3	17:00	1	PitmoreM	4	150	40	6	4%
19/3	17:00	1	Brighton	5	88	40	5	6%
20/3	08:00	1	Arnewood	29	228	42	41	18%
20/3	17:00	1	PitmoreS	26	149	50	31	21%
Overall		5		66	811	50	92	11%

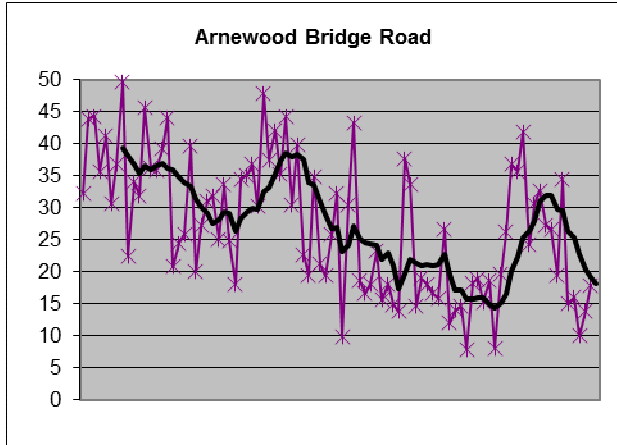
Statistics since we began in 2014 can be viewed at <http://www.sway-pc.gov.uk/csw>

The new VASLR was positioned at Durnstown a little further north than our CSW location. This enabled us to observe that several vehicles did slow down on seeing the VASLR flash its message, such that when they were detected by SID, they were under the reporting threshold. It also enabled us to verify the accuracy of the counter in the VASLR.

Unavailability of volunteers accounted for the limited number of sessions this month. It should be noted however that, had we been permitted to operate with just 2 volunteers, we could have managed another 3 x 1 hour sessions. There is no logical reason why we should not be permitted to do this and it would enable us to provide far greater coverage.

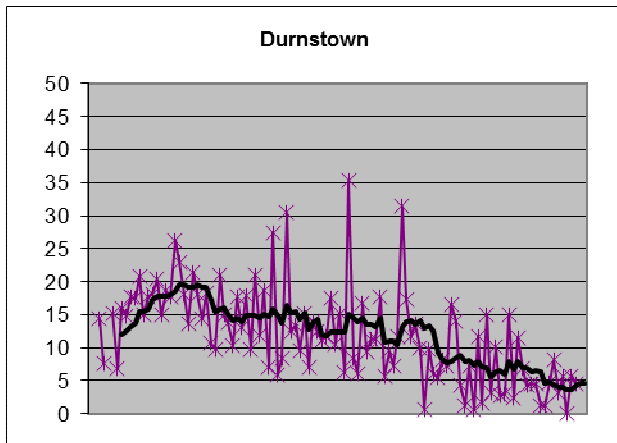
**These charts show how the percentages of vehicles speeding at 35 mph or more have changed since we began collecting SID stats in July 2014.**

The trend lines are 8 session rolling averages hopefully giving an indication of any improvement or otherwise in the the statistics.



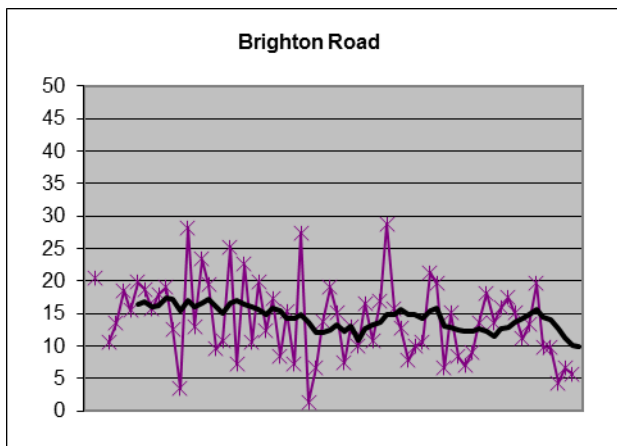
**Arnewood Bridge Road** was not as calm as last month so it is unlikely to be downgraded in the near future.

**Status RED**



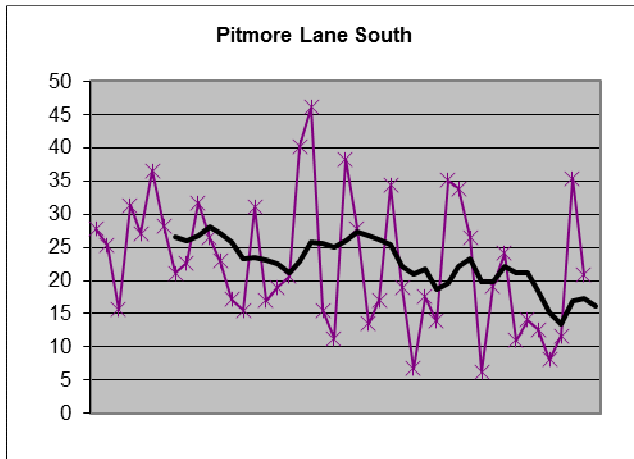
**Durnstown** traffic was generally behaving very well coming off the forest especially with the VASLD in place nearby. Even traffic in the opposite direction seemed calmer.

**Status GREEN**



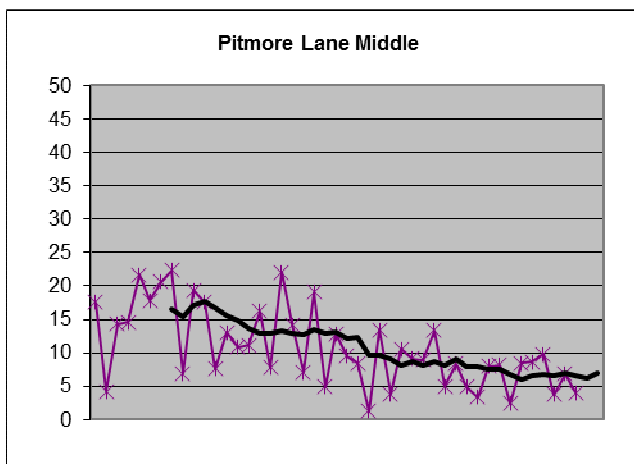
**Brighton Road** was quite quiet but needs to improve further before we can lower its status. There is still too much traffic speeding on this road with no footpath and many vulnerable pedestrians.

**Status AMBER**



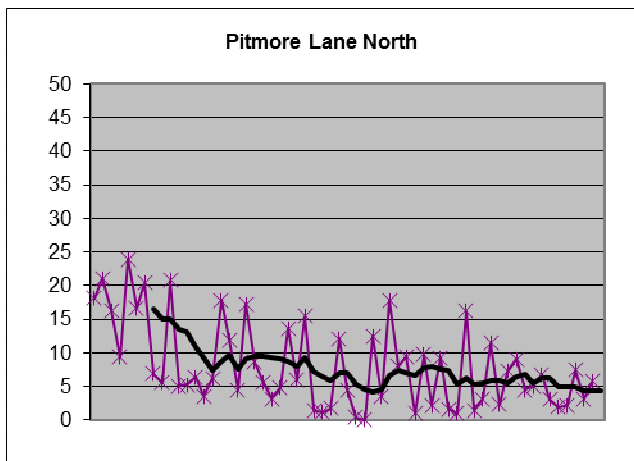
**Pitmore Lane South** although slightly better than last month is still deeply worrying and now could well be worse than Arnewood Bridge. Speeds in excess of 40 mph with a peak of 50 mph is deeply disturbing for this road where many horse riders and other vulnerable users share the road space.

**Status RED**



**Pitmore Lane Middle** was again quite calm.

**Status GREEN**



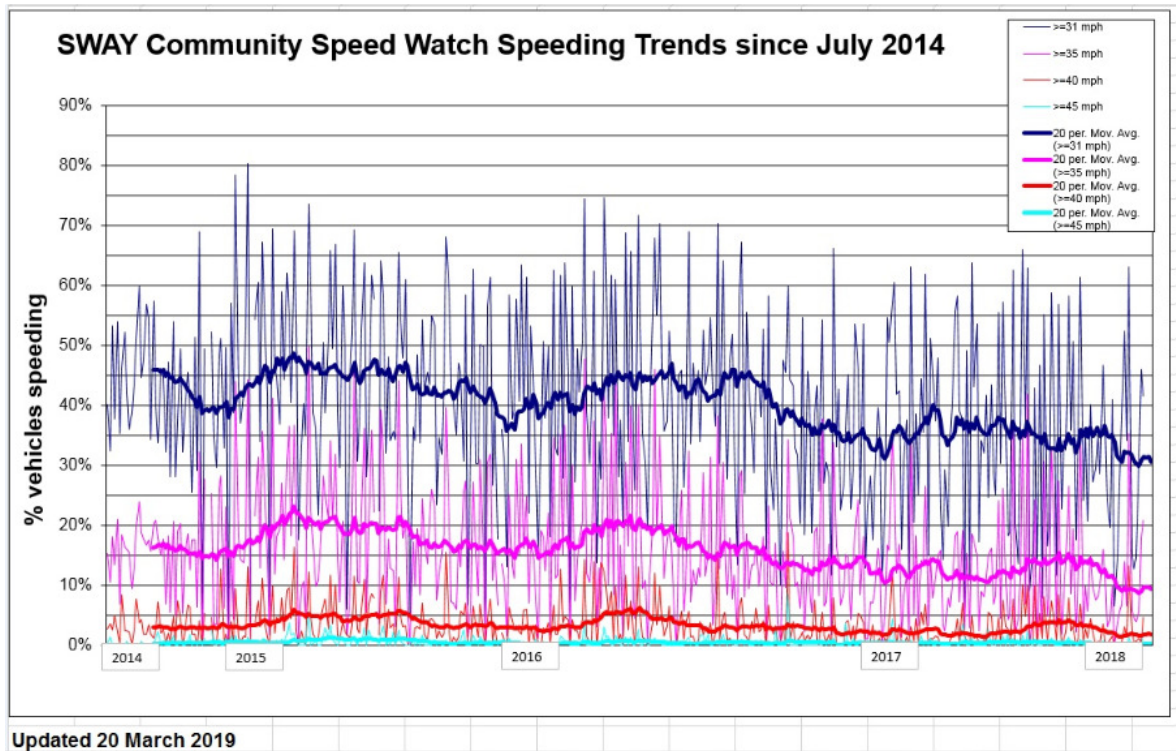
**Pitmore Lane North.** We did not conduct any session here this month owing to lack of resource.

**Status GREEN**

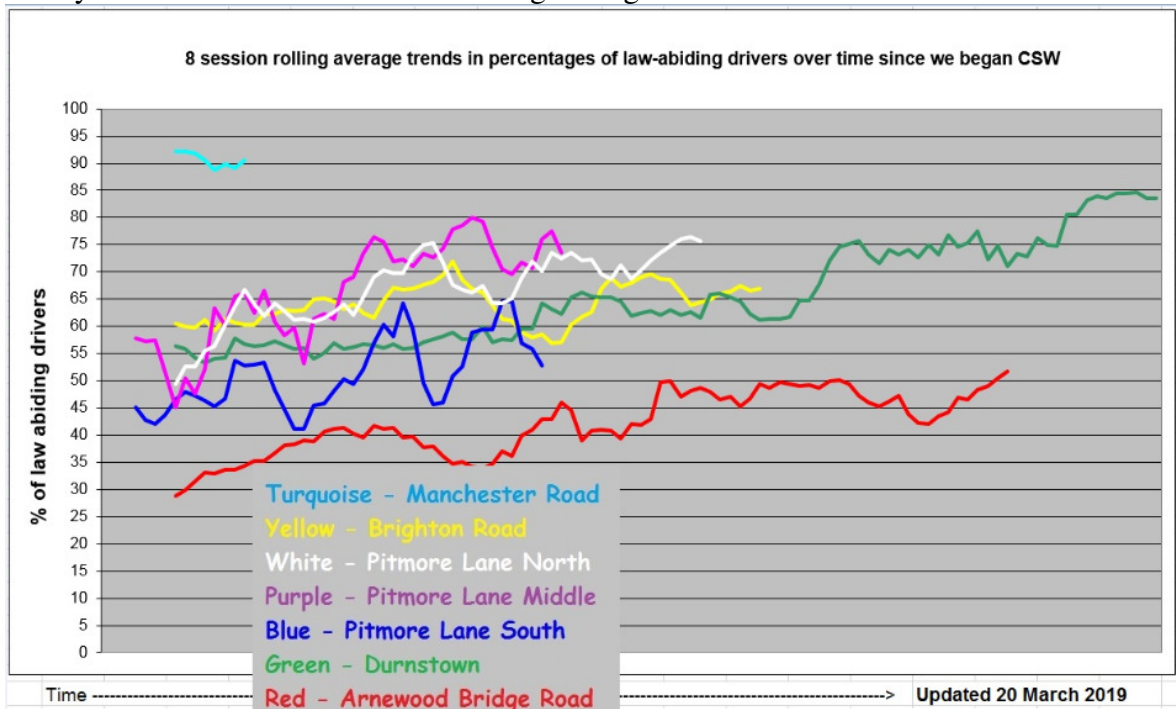
Manchester Road is perceived to be a problem area by residents. Our 13 surveys there so far have recorded just thirteen motorists exceeding 35mph. However it may well be that 30 mph is too high a speed limit for the conditions.

**Charts from website for those without internet access**

Overall Speeding Trends. This does not take into account location. Trend lines are 20 session rolling averages. All the trend lines are now showing a slight improvement. We would like them all to drop downwards further.



Trends in percentages of drivers obeying the 30 mph speed limit on each of the roads surveyed. Trend lines are 8 session rolling averages. Here we **do** want the lines to rise.





Quite Interesting statistics since we began Community Speed Watch in April 2014.

Week beginning	Number of Session Hours	Volunteer hours at roadside	Speeding Vehicles recorded by volunteers	Number of letters sent out by police	Data Extracted from Speed Indicator Device						Maximum Speed Recorded	Total Volunteer hours	Rolling 12 month total speeders recorded	Rolling 12 month average >35 mph	Rolling 12 month letters sent
					Total Vehicles Surveyed (passing)	Vehicles exceeding 30 mph	% Vehicles exceeding 30 mph	Vehicles exceeding 35 mph	% Vehicles exceeding 35 mph	SID Stats					
April 28th 2014	24	72	290	0	SID Stats	SID Stats	SID Stats	SID Stats	SID Stats	SID Stats	107				
June 2nd 2014	18	54	244	180	were not collected	were not collected	were not collected	were not collected	were not collected	were not collected	84.5				
June 30th 2014	12	36	232	166							56				
July 21st 2014	20	60	260	115	2478	1102	44%	367	15%	47	96		15%		
Sept 8th 2014	18	54	363	211	2805	1389	50%	539	19%	52	111.5		17%		
Oct 6th 2014	18	54	286	255	3174	1268	40%	421	13%	46	111.5		16%		
Nov 3rd 2014	5.5	16.5	64	64	973	377	39%	135	14%	50	52.5		15%		
Dec 1st 2014	8	25	180	70	1416	726	51%	321	23%	55	53.5		17%		
Jan 26th 2015	3.5	13	60	53	547	226	41%	84	15%	59	39.5		17%		
Feb 23rd 2015	8	24	99	94	921	416	45%	150	16%	47	40.9		16%		
Mar 23rd 2015	9	27	201	187	1266	658	52%	299	24%	49	52		17%		
Apr 20th 2015	15	45	333	310	1863	916	49%	408	22%	55	71	2612	18%	1705	
May 18th 2015	13	39	280	254	1550	789	51%	388	25%	68	62.5	2602	19%	1959	
June 15th 2015	13.5	40.5	280	Data not available	1825	852	47%	373	20%	66	75.5	2638	19%	1779	
July 13th 2015	15	47.5	329		2169	1083	50%	443	20%	50	75	2735	19%	1613	
Aug 10th 2015	13.5	42	234	Available	1530	705	46%	308	20%	52	65.5	2709	19%	1498	
Sep 7th 2015	12	36	298		1820	854	47%	387	21%	55	59.5	2644	20%	1287	
Nov 30th 2015	14	29	0	0	1879	816	43%	312	17%	56	41	2358	20%	1032	
Jan 18th 2016	12	25	0	0	1996	874	44%	368	18%	47	39	2294	20%	968	
Feb 22nd 2016	11	30	134	129	1331	574	43%	179	13%	47	52	2248	19%	1027	
Mar 18th 2016	10.2	27.6	176	170	1495	611	41%	265	18%	49	48.6	2364	20%	1144	
Apr 18th 2016	14	40	239	235	2264	928	41%	379	17%	56	63	2504	20%	1285	
May 16th 2016	11	32	174	169	1860	672	36%	228	12%	49	51.5	2477	19%	1267	
June 13th 2016	14.3	40.9	314	311	2339	1005	43%	455	19%	48	67.15	2458	18%	1268	
July 11th 2016	13.5	36	290	281	2010	963	48%	430	21%	51	69.75	2468	18%	1295	
Aug 8th 2016	13.5	39.5	264	256	2259	985	44%	450	20%	61	65.25	2452	18%	1551	
Sep 5th 2016	10.75	31.5	247	244	1762	850	48%	372	21%	51	53.5	2370	18%	1795	
Oct 3rd 2016	10.5	27	254	251	2196	992	45%	413	19%	50	53	2390	18%	2046	
Oct 31st 2016	8	24	102	99	1317	471	36%	166	13%	46	43	2194	17%	2145	
Nov 28th 2016	7.7	23.1	128	128	1194	535	45%	171	14%	49	41.6	2322	17%	2273	
Jan 23rd 2017	5	17	81	81	579	292	50%	119	21%	46	34	2403	17%	2354	
Feb 20th 2017	5	15	92	88	666	301	45%	123	18%	50	33	2361	18%	2313	
Mar 20th 2017	6.75	22.25	126	121	1414	575	41%	203	14%	48	42.75	2311	17%	2264	
Apr 18th 2017	6	18	95	91	967	379	39%	127	13%	51	36.25	2167	17%	2120	
May 15th 2017	8.5	25.5	118	116	1688	572	34%	196	12%	54	51.5	2111	17%	2067	
June 12th 2017	9.8	29.4	153	153	1833	707	39%	263	14%	54	50.4	1950	17%	1909	
July 10th 2017	9	27	97	96	1199	450	38%	139	12%	44	48	1757	16%	1724	
August 7th 2017	7.75	23.25	123	122	1116	422	38%	213	19%	54	43.25	1616	16%	1590	
Sept 4th 2017	6.5	19.5	67	63	1022	334	33%	107	10%	48	40.5	1436	15%	1409	
Oct 2nd 2017	10.5	31.5	131	126	1973	696	35%	234	12%	47	74	1313	14%	1284	
Oct 30th 2017	7	21	87	84	1089	396	36%	123	11%	54	41.25	1298	14%	1269	
Nov 27th 2017	7	23	128	123	1028	396	39%	145	14%	59	43	1298	14%	1264	
Jan 23rd 2018	6	18	66	64	718	237	33%	84	12%	48	36.5	1283	14%	1247	
Feb 19th 2018	7	21	113	112	1177	503	43%	147	12%	55	42	1304	13%	1271	
Mar 19th 2018	9	27	102	99	1432	527	37%	134	9%	46	48	1280	13%	1249	
Apr 16th 2018	7	21	106	104	1273	438	34%	147	12%	53	41.75	1291	12%	1262	
May 14th 2018	5.5	18.5	68	66	1092	377	35%	117	11%	48	38.75	1241	12%	1212	
June 11th 2018	5	15	84	82	918	343	37%	116	13%	50	35	1172	12%	1141	
July 9th 2018	9	27	139	135	1436	496	35%	194	14%	55	47	1214	12%	1180	
August 6th 2018	8	24	135	130	1017	385	38%	204	20%	48	45.5	1226	12%	1188	
Sep 3rd 2018	10	30	157	154	1471	522	35%	216	15%	52	55	1316	13%	1279	
Oct 1st 2018	8	24	130	128	1369	488	36%	168	12%	57	49.5	1315	13%	1281	
Oct 29th 2018	5	15	62	61	1008	335	33%	108	11%	44	32.5	1290	13%	1258	
Nov 26th 2018	4	12	44	42	703	237	34%	66	9%	48	35	1206	12%	1177	
Jan 21st 2019	3.3	9.9	25	25	597	160	27%	37	6%	43	25.9	1165	12%	1136	
Feb 18th 2019	5	15	83	82	738	326	44%	106	14%	50	33.5	1135	12%	1108	
Mar 18th 2019	5	15	66		811	242	30%	92	11%	50	33	1099	12%		
<b>Overall</b>	<b>562.05</b>	<b>1655.9</b>	<b>9033</b>	<b>6780</b>	<b>78573</b>	<b>32773</b>	<b>42%</b>	<b>12739</b>	<b>16%</b>	<b>68</b>	<b>3039.175</b>				
Week beginning	Number of Session Hours	Volunteer hours at roadside	Speeding Vehicles recorded by volunteers	Number of letters sent out by police	Total Vehicles Surveyed (passing)	Vehicles exceeding 30 mph	% Vehicles exceeding 30 mph	Vehicles exceeding 35 mph	% Vehicles exceeding 35 mph	Maximum Speed Recorded	Total Volunteer hours	Rolling 12 month total speeders recorded	Rolling 12 month average >35 mph	Rolling 12 month letters sent	

To get a clearer picture, go to <http://www.sway-pc.gov.uk/csw>